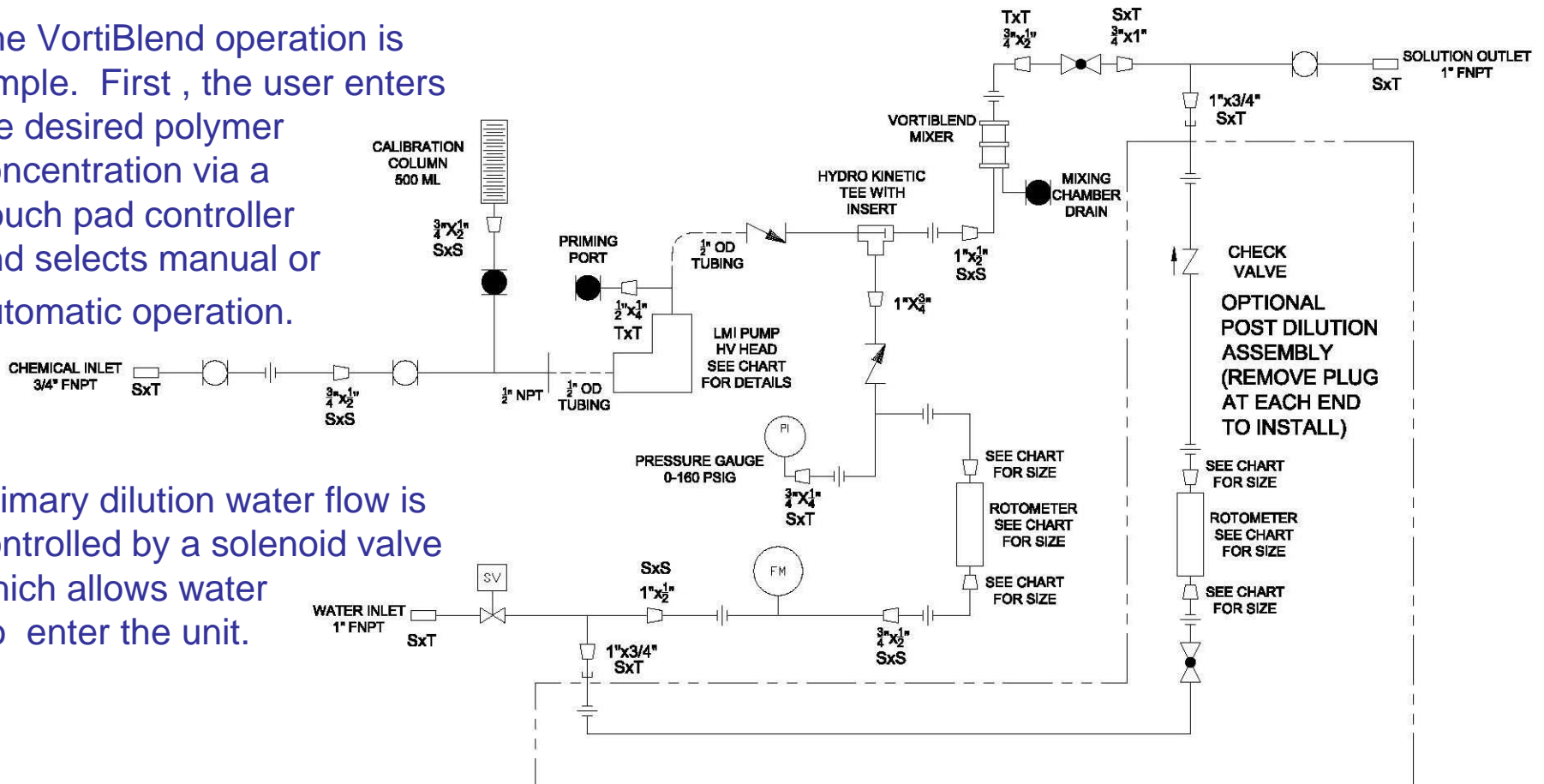


Operational Sequence

The VortiBlend operation is simple. First, the user enters the desired polymer concentration via a touch pad controller and selects manual or automatic operation.

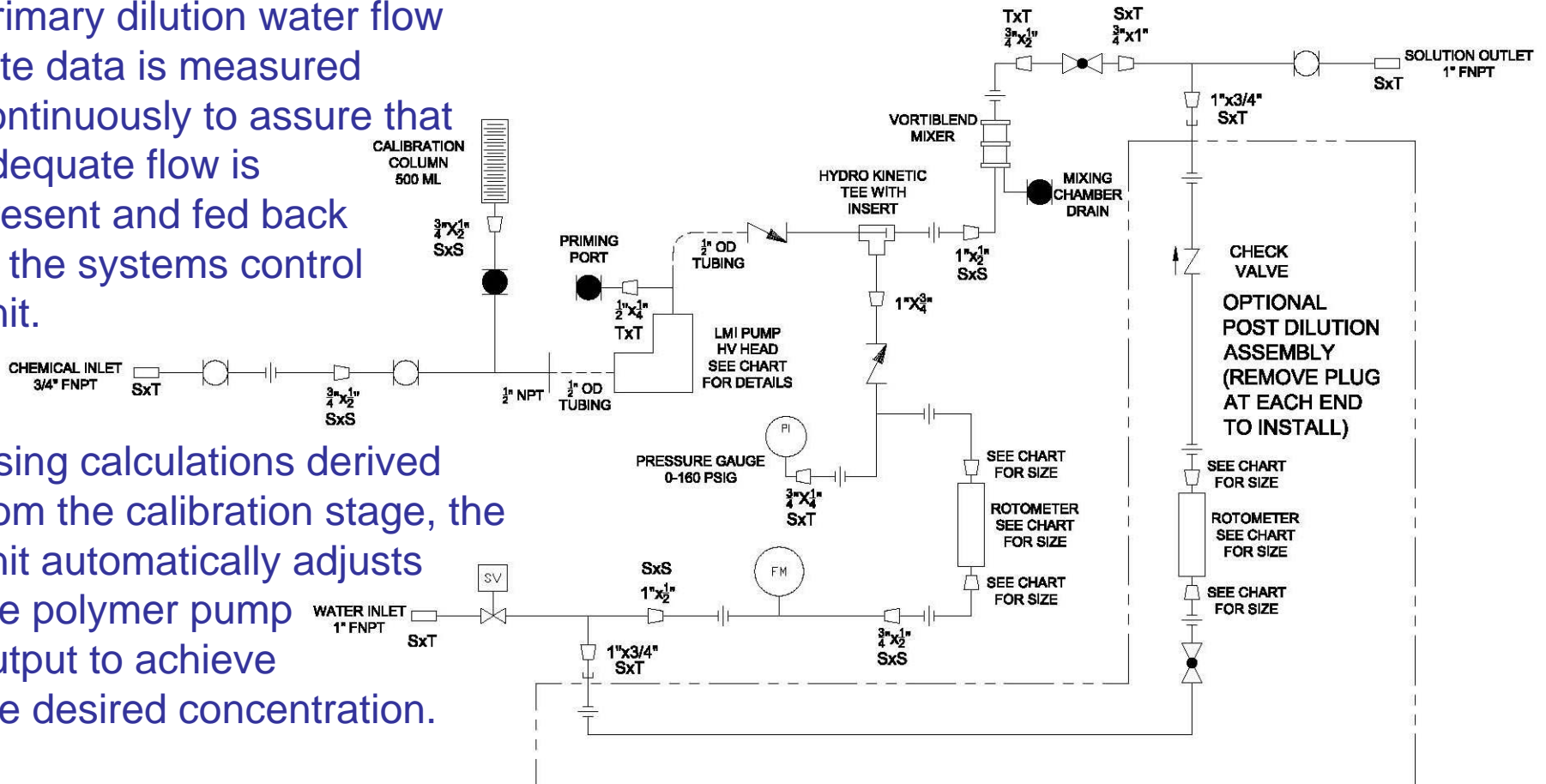
Primary dilution water flow is controlled by a solenoid valve which allows water to enter the unit.



Operational Sequence

Primary dilution water flow rate data is measured continuously to assure that adequate flow is present and fed back to the systems control unit.

Using calculations derived from the calibration stage, the unit automatically adjusts the polymer pump output to achieve the desired concentration.

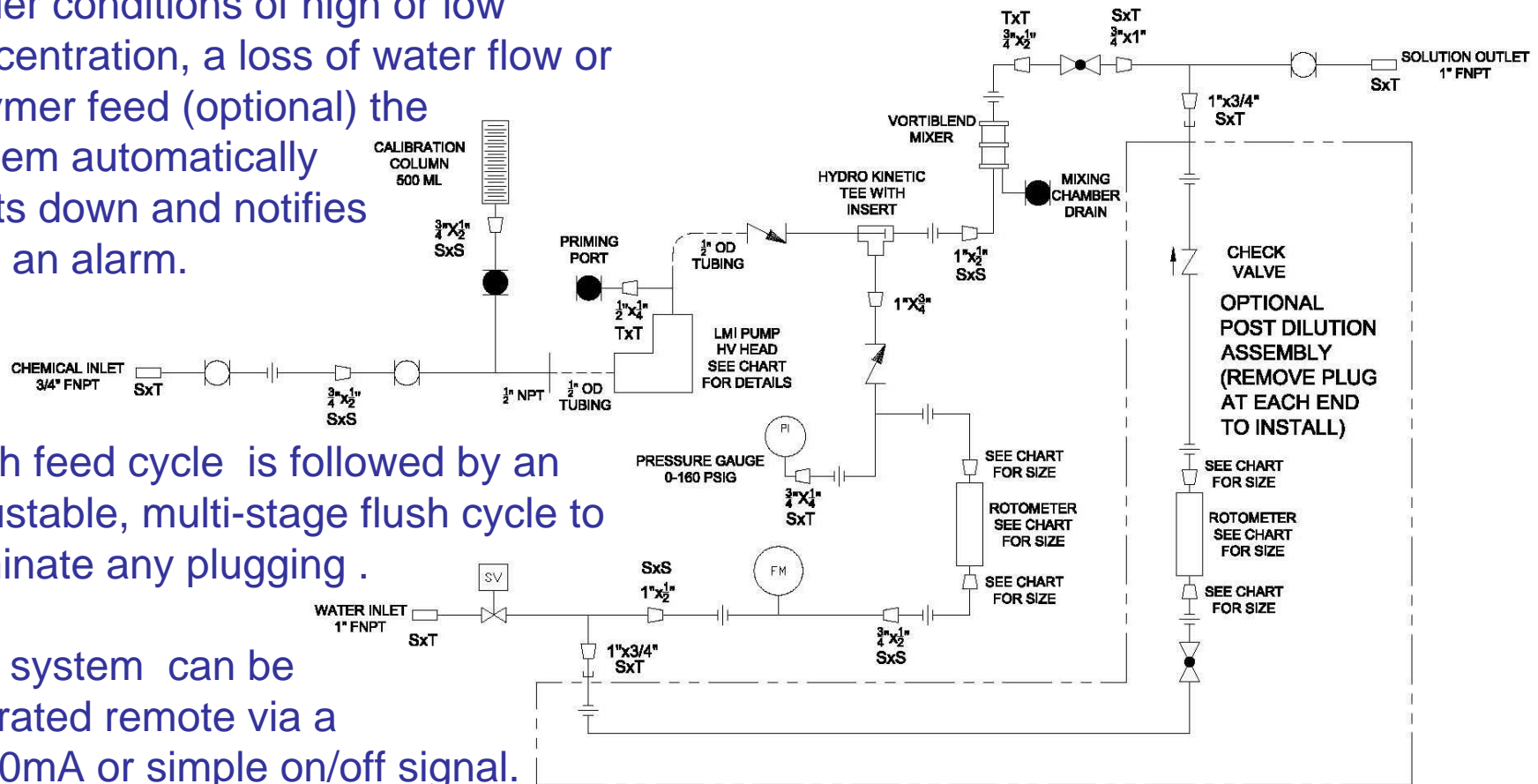


Operational Sequence

Under conditions of high or low concentration, a loss of water flow or polymer feed (optional) the system automatically shuts down and notifies with an alarm.

Each feed cycle is followed by an adjustable, multi-stage flush cycle to eliminate any plugging.

The system can be operated remote via a 4-20mA or simple on/off signal.



Note: A secondary dilution module can be added for applications requiring post dilution